



高像素 VIS-SWIR 相机

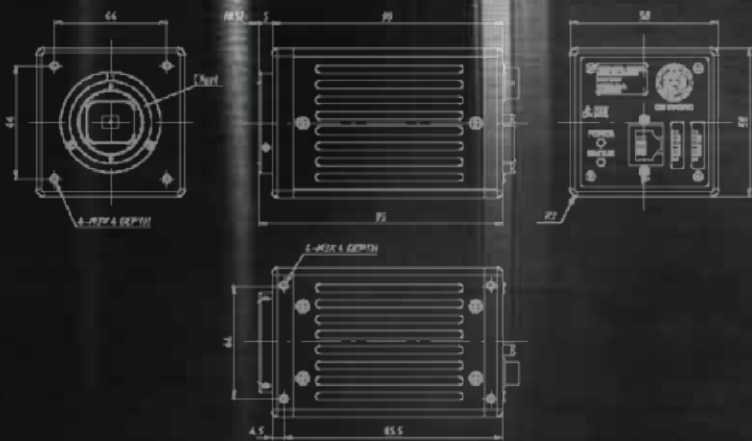
SXGA: **ABA-013VIR**

VGA: **ABA-003VIR**

可覆盖可见光至近红外光的

Sony社 IMX990/991Sensor搭载

新品



ABA-013VIR/ABA-003VIR

AVAL DATA CORPORATION

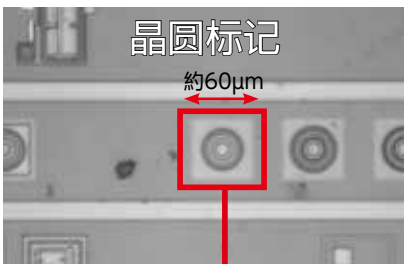
Sony
IMX990 传感器
搭载



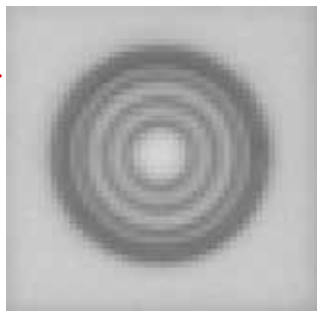
高像素, 宽带应用
半导体检测用
SXGA VIS-SWIR相机
ABA-013VIR

像素大小 $5\mu m$ 易于检测细微缺陷
与VGA (0.3MP) 相比, 变大4倍的 **1.3MP** 像素

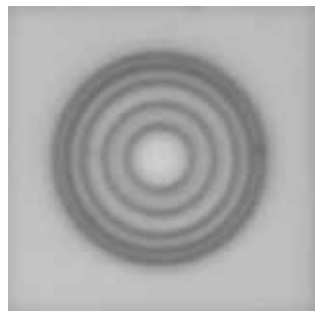
高像素的摄影例子



《使用环境》
Microscope Lens
光学倍率: 15x 镜头 x 光门 0.6=9x
FOV 0.71mm/检测对象 60 μm



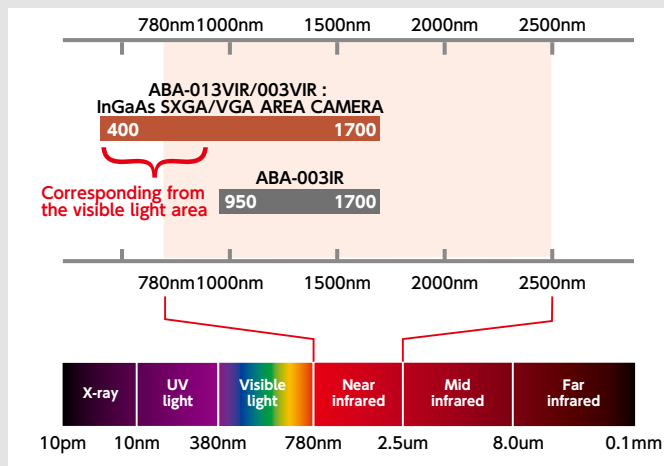
VGA 相机



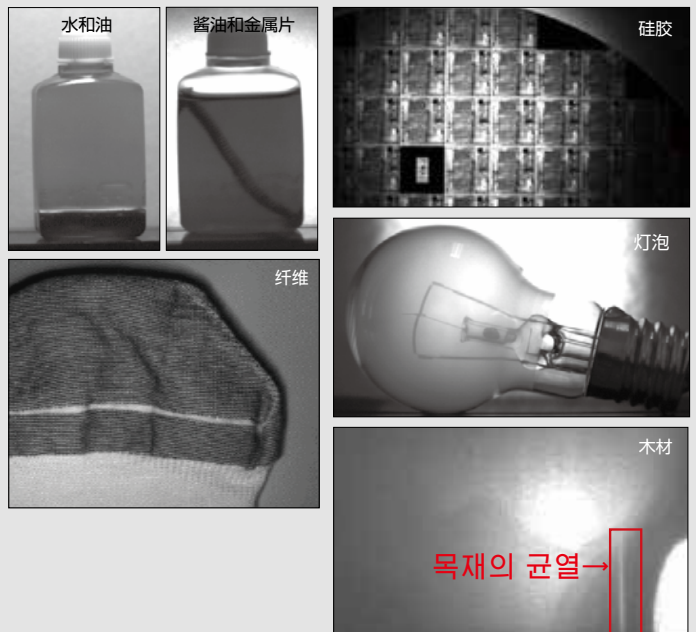
ABA-013VIR



从可见光400nm
至近红外1700nm
可覆盖宽带应用



近红外相机影像采样



Sony
IMX991 传感器
搭载



高速应用

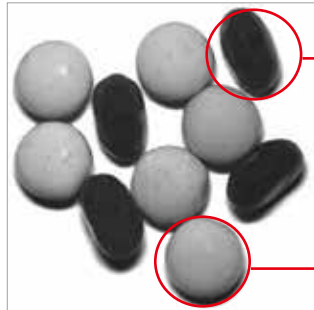
食品、材料等的异物检测用 VGA VIS-SWIR相机 ABA-003VIR

与现有InGaAs传感器相比,迷你化的**5 μ m**像素大小
「[高速内线检测用]」VIS-SWIR 相机

■ 检测示例 ①：挑选颜色和形态不同的食品

通过使用彩色或黑白相机可以识别无法辨识的食品异物

◎ 饼干（糖果，果冻）

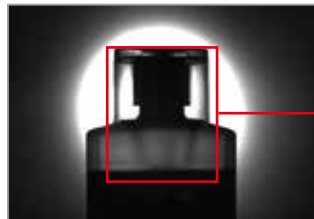


根据水分量可分别
水分量越多图像越黑

■ 检测示例 ② 从外观上较难确认的检测

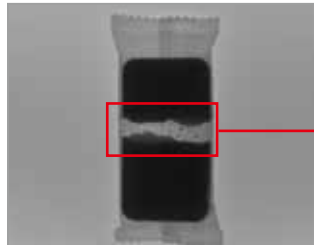
外观上无法检测里面内容时，通过 SWIR 相机可以检测到

◎ 塑料瓶



可检测确认有无内部
瓶盖及内部内容

◎ 塑料袋

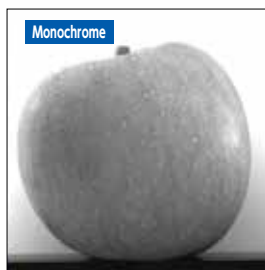


可检出内容损坏



可检测不良的
收尾部分

◎ 水果瑕疵



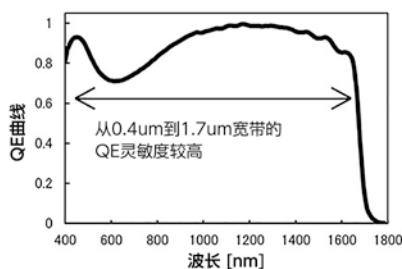
■ ABA-013VIR/ABA-003VIR 主要配置

Model name	ABA-013VIR		ABA-003VIR
Image sensor	Effective pixels : 1280H x 1024V Pixel size: 5 μ m \times 5 μ m Image effective size : 6.4mm x 5.12mm		Effective pixels : 640H x 512V Pixel size: 5 μ m \times 5 μ m Image effective size : 3.2mm x 2.56mm
Interface	Gigabit Ethernet (1000BASE-T) / Camera Link (SDR)		
Spectral response range	400nm ~ 1700nm		
Pixel clock interval	74.25MHz Data rate : 18.5625MHz		
Frame rate	8bit	60.00FPS (max) @GigE 134.73FPS (max) @Camera Link	240.00FPS (max) @GigE 258.80FPS (max) @Camera Link
	10bit	30.00FPS (max) @GigE 125.26FPS (max) @Camera Link	120.00FPS (max) @GigE 240.61FPS (max) @Camera Link
	12bit	30.00FPS (max) @GigE 71.52FPS (max) @Camera Link	120.00FPS (max) @GigE 137.39FPS (max) @Camera Link
Exposure time	6 μ s ~ 10ms (Setting range:6 μ s ~ 9.99s)		
Shutter	Global shutter		
Signal to noise ratio	54dB		
Sensor readout noise	200e-		
Gain up	0dB ~ +12dB		
Main function	Status LED, Internal cooling mechanism, external trigger, ROI, Field Upgraded Function, Various correction (DSNU, PRONU, pixel defect, shading)		
Video output	8 / 10 / 12bit		
Synchronization	Internal		
Power	Input voltage : DC+12V~DC+24V \pm 1V / Power consumption : 7W		
Lens mount	C mount, 1/2 inch format or larger		C mount, 1/4 inch format or larger
Operating temperature/humidity	+0 $^{\circ}$ C ~ +45 $^{\circ}$ C / 20 ~ 80% (Non-condensing)		
Storage temperature/humidity	-15 $^{\circ}$ C ~ +65 $^{\circ}$ C / 20 ~ 80% (Non-condensing)		
Sensor setting temperature	+5 $^{\circ}$ C ~ +35 $^{\circ}$ C / 20 ~ 80% (However, to use within operating temperature)		
External dimensions	58(W) x 58(H) x 90(D) mm (Including mounting parts and protrusions.)		
Weight	400g		
Adaptive standard	RoHS2, CE(in preparation)		

■ IF 背面 (GigE)



■ 宽带特点



Software development kit

Gigabit Ethernet (1000BASE-T)

For image acquisition / communication:
SDK-TransFlyer (Model name: AZP-ACAPTF-01)
GigE Vision®, GenICam™, GenICam™ GenTL Compliance

Camera Link

For image acquisition:
SDK-AcapLib2 (Model name: AZP-ACAP-02)
For camera communication:HyperTerminal Or compliant software

注意) 在传单上的相机镜头需要另行购买

AVAL GLOBAL

C-607, 338 Gwanggyojungang-ro, Suji-gu, Yongin-si, Gyeonggi-do, South Korea 16942

TEL
+82-70-7019-1420

Email
sales@aval-global.com

URL
www.aval-global.com

Specifications are subject to change without notice. All brand names in this leaflet are trademarks of their respective owners. ISO9001,ISO14001 certified.

As of January ,2021
K2101XX01